



Wingover Farm, 114 acres
Stevens Road, Thetford VT
Conserved in 2000
Conservation Easement donated to UVLT

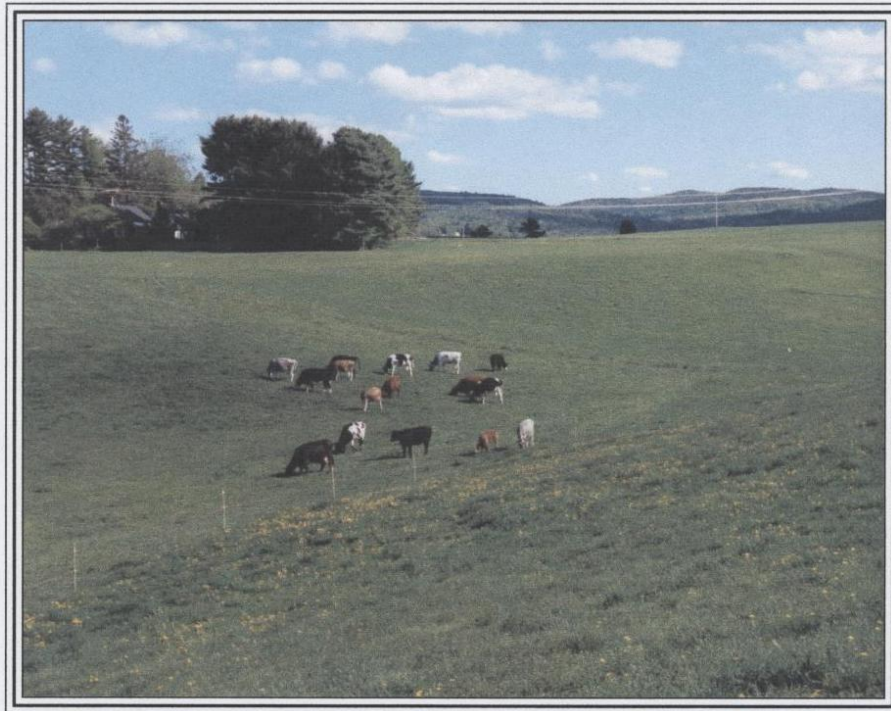
Project Story (from UVLT archives)

Forbes, Wingover Farm, 114.2 Acres

Thetford, December 2000

Donated Conservation Easement

Over years of mowing her fields and cross-country skiing to their farthest corners, Edith Forbes has come to know every contour of the land intimately – its swallows and songbirds, hills and hollows, woodchuck holes and wet spots where the mower gets stuck. Her easement with UVLT conserves these 58 acres of productive agricultural land on a narrow band of prime soils between the Thetford Hills and Connecticut River. The fields abut those of La Mountain Farm, conserved by UVLT in 1989. Just across I-91, Forbes has conserved another 56 acres of ledgy forestland, rising steeply from the highway to the summit of Wilmot Mountain. The gently rolling fields and prominent hillside both provide scenic views from the highway. The property’s long frontage on Stevens Road, its excellent soils, and its proximity to Hanover made it highly vulnerable to future development - now no longer a concern.



Wingover Farm