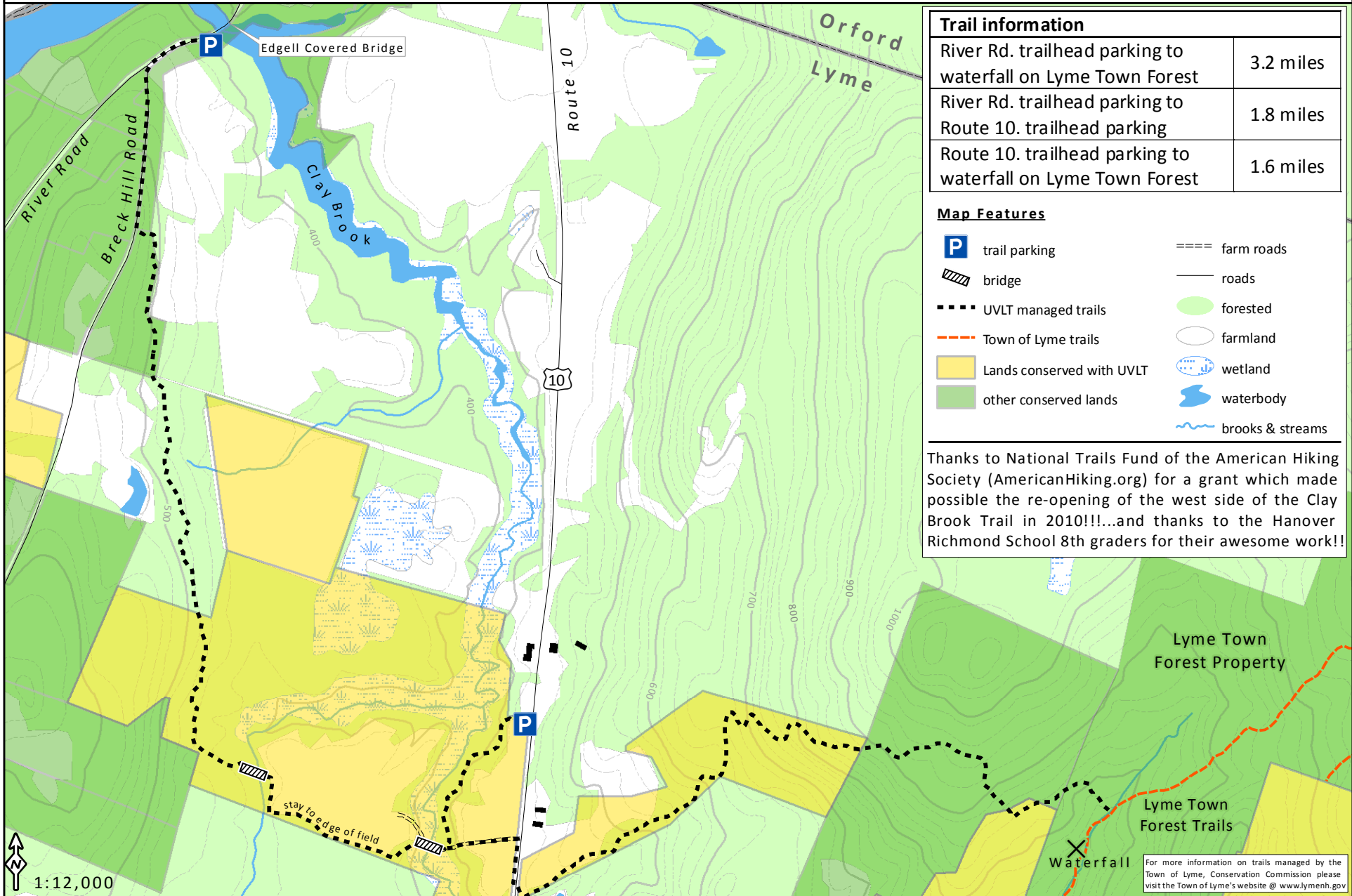


UVLT Trail Map

Clay Brook Trail, Lyme, NH



Trail information	
River Rd. trailhead parking to waterfall on Lyme Town Forest	3.2 miles
River Rd. trailhead parking to Route 10. trailhead parking	1.8 miles
Route 10. trailhead parking to waterfall on Lyme Town Forest	1.6 miles

Map Features	
P trail parking	==== farm roads
bridge	— roads
••••• UVLT managed trails	○ forested
— Town of Lyme trails	○ farmland
Lands conserved with UVLT	wetland
other conserved lands	waterbody
	brooks & streams

Thanks to National Trails Fund of the American Hiking Society (AmericanHiking.org) for a grant which made possible the re-opening of the west side of the Clay Brook Trail in 2010!!!...and thanks to the Hanover Richmond School 8th graders for their awesome work!!!

1:12,000

0 0.125 0.25 0.5 Miles

Data Sources: cover type was digitized over NAIP aerial imagery (2009) Grafton Cty distributed by USDA Data Gateway; contour interval is 20'; conserved lands boundaries are a combination of UVLT records, digital tax map for the Town of Lyme (2005), & conserved lands distributed by NH Granit (2010); trail length and location is based on handheld GPS data acquired in 2005 & 2010; Map file: ClayBrookTrailMap_062010.mxd; Map Projection: NH SPCS, NAD83, ft; Prepared June 2010 (ALB) revised October 2012 (ALB)

For more information on trails managed by the Town of Lyme, Conservation Commission please visit the Town of Lyme's website @ www.lymenh.gov