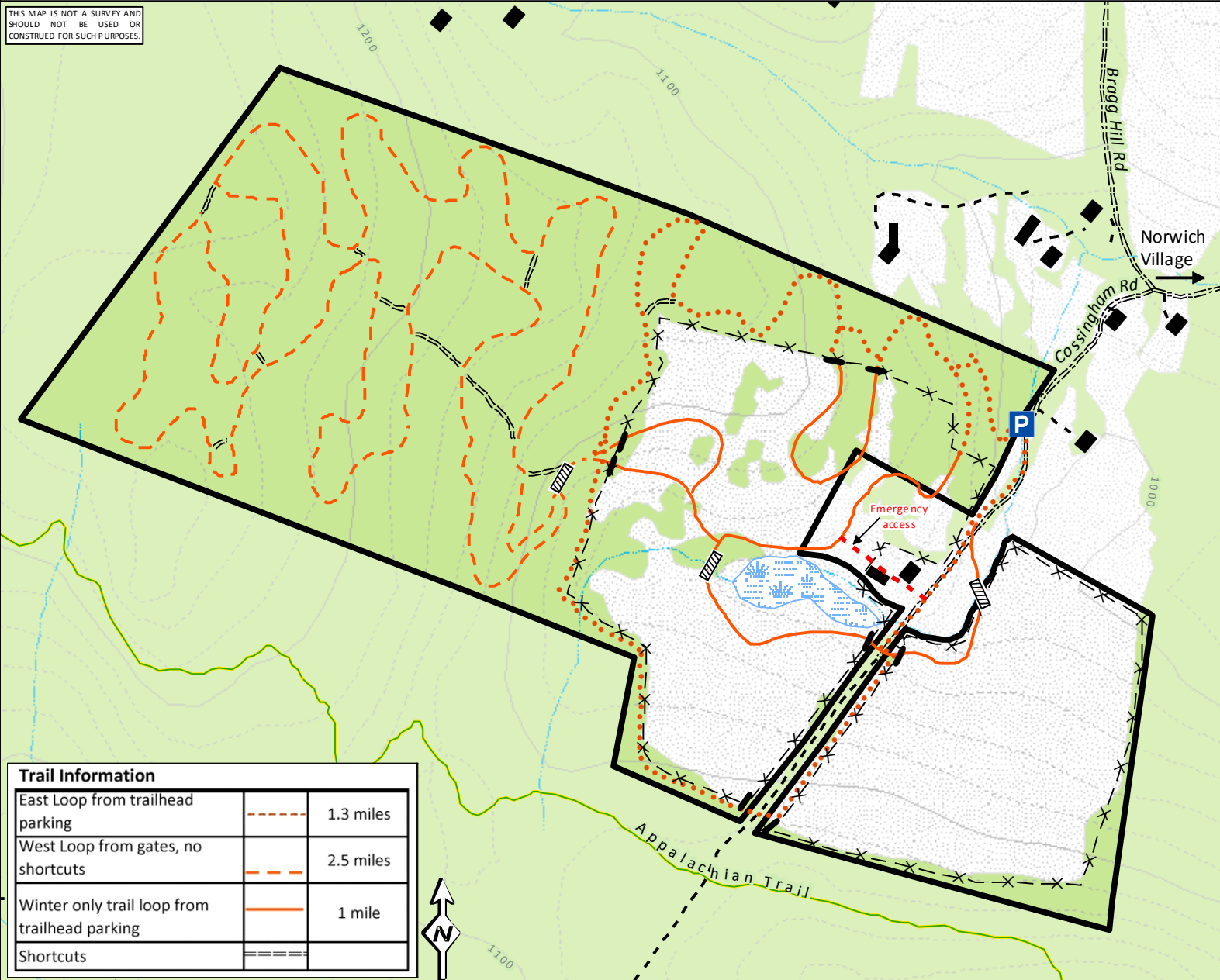


# Trail Map

## Cossingham Road Farm Trails, Norwich, VT



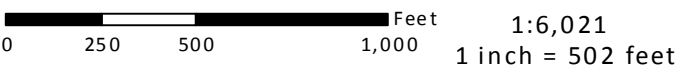
THIS MAP IS NOT A SURVEY AND SHOULD NOT BE USED OR CONSTRUED FOR SUCH PURPOSES.



- ### Map Features
- land conserved with UVLT
  - trail parking
  - foot bridge
  - electric fencing
  - gates If gate is closed the trail is closed
  - forested
  - farmland
  - wetland
  - brooks & streams
- ### Trails
- East Loop
  - West Loop
  - Winter only trails
  - Shortcuts

*Note:*  
 Parking for trail use is only at the designated area. Please respect the privacy of landowners on Cossingham Rd.  
 Cossingham Road Farm is privately owned land that is protected with a conservation easement held by the Upper Valley Land Trust. It is a working farm during the warmer months. Please stay on designated trails.  
 Trail data provided by Jonathan Frishtick, Norwich, VT

Trail Information		
East Loop from trailhead parking		1.3 miles
West Loop from gates, no shortcuts		2.5 miles
Winter only trail loop from trailhead parking		1 mile
Shortcuts		



Data Sources: Land cover was digitized over NAIP aerial imagery (2009) Windsor Cty distributed by Geospatial Data Gateway; Trail locations are based on handheld GPS data collected July, 2004; road data distributed by VCGI; Contours are 20' interval; Although the AT data is quite accurate, the info depicted is for general reference only & does not represent legal survey information. The ATC, the NPS, AT Park Office, agency partners (including other units of the NPS and the USDA FS), & associate trail-maintaining clubs shall not be held liable for improper or incorrect use of the data described and/or contained herein. Map Projection is NAD83, m, VTSPCS; Map revised 3/2011(ALB)