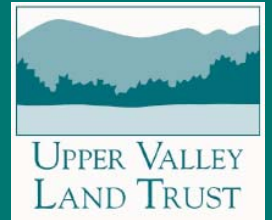


# Ely Mountain Conservation Area



## Conserving a “Crown Jewel”

Ely Mountain lies at the northern edge of Thetford’s largest block of unbroken forest land, between the Connecticut River Valley and Lake Fairlee. The high elevation forest is marked with rock outcroppings, glacial boulders, seeps and streams. The Thetford Conservation Commission has identified this area as one of the town’s most significant “crown jewels.”

Now there’s an opportunity to ensure the future of the forest and wetlands of the Ely Mountain area. Success depends on contributions from townspeople, neighbors, the conservation community, interested groups, and members of the Upper Valley Land Trust.



*Gateway trees on the Ely Mountain property. We welcome you to discover the joys of exploring this area and participate in conserving this land.*

## Project Scope

The Upper Valley Land Trust (UVLT) has assisted Jock and Deecie Denison to create a 208-acre conservation area that will be owned and managed by UVLT. Parking and access to trails on the property will be provided from Quinibeck Road.

## Timing and Cost

The Denisons have been working with the Upper Valley Land Trust since 2012 to plan for the future of their property. The final phase of acquisition will be complete with the raising of \$30,000 for the land survey, legal and associated land management costs. We hope to complete the transaction before the close of 2014.

**The parcel is a gift from generous landowners. We need to raise \$30,000 before December 31 to complete the acquisition.**

## Conservation Solutions for the Places You Love

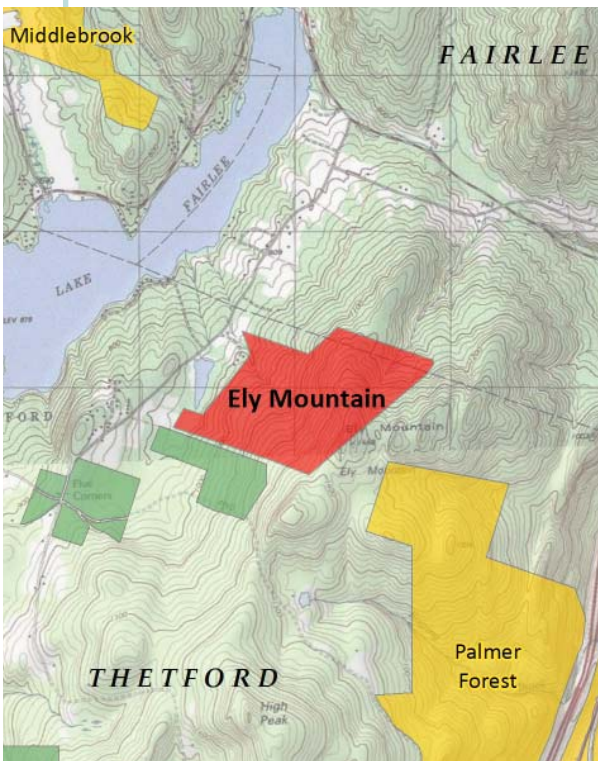
### Ely Mountain

- 208 Acres
- Gateway to Thetford’s largest unfragmented habitat block
- Forested viewshed from Lake Fairlee
- Hiking trails with vistas to New Hampshire peaks and Lake Fairlee
- Extends habitat protection offered by nearby Palmer Woodland
- Natural area for townspeople, outdoor enthusiasts, summer campers, schoolchildren, vacationers

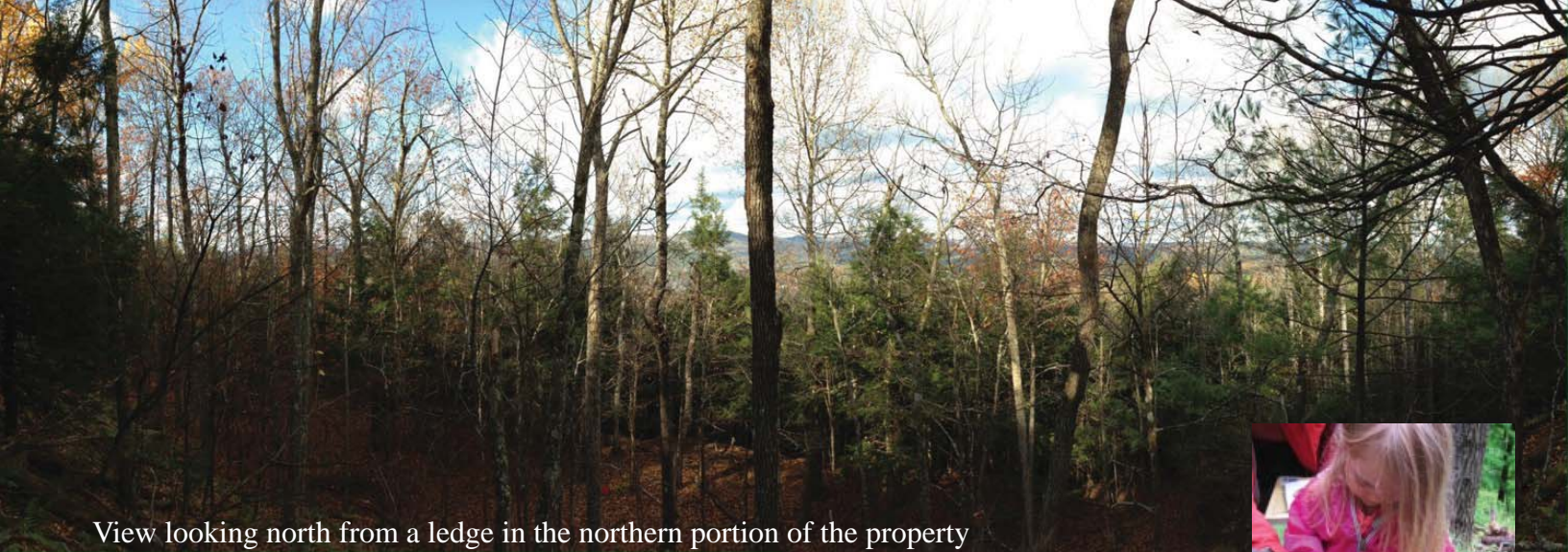
## YOU CAN HELP!

Make your gift payable to:  
Upper Valley Land Trust  
19 Buck Road  
Hanover, NH 03755

or make a secure online contribution at:  
[www.UVLT.org](http://www.UVLT.org)







View looking north from a ledge in the northern portion of the property



## Questions About the Ely Mountain Conservation Project?

### How was this property selected for conservation?

For several years, the Thetford Conservation Commission has been evaluating natural resources in the town to identify those areas most significant for conservation. Properties with outstanding ecological integrity, or significant water, soil or scenic resources were identified as “crown jewels.”

### Why does UVLT own land?

While many of the properties that UVLT conserves remain in private hands, our goal in outright ownership is to ensure that all Upper Valley residents have the opportunity to enjoy the benefits of conserved land and participate in its stewardship. The lands we own are available as outdoor classrooms for all ages.

### Will UVLT pay property taxes?

Yes. In addition, the Ely Mountain property is presently enrolled in Vermont’s Use Value program and will remain so.

### Will additional trails be built?

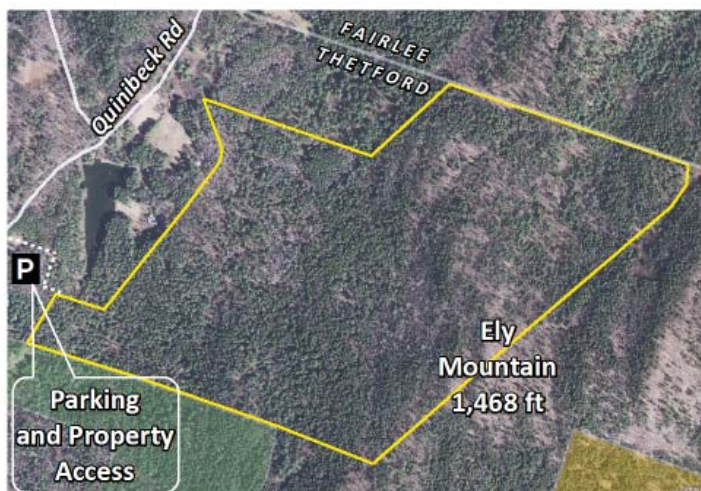
The Denisons previously have worked with Morton Trails to identify, flag and map over 10 kilometers of trail that could be built. A portion has been constructed. In coming years, depending on level of public interest, construction costs and availability of funds, more trail improvements could occur. At this time, woods roads and open forest understory provide ample opportunity for enjoyment by hikers and naturalists.

### Does UVLT post land against hunting?

UVLT does not post against hunting of locally abundant species. Deer hunting is actually beneficial since excessive deer browse harms forest regeneration and encourages invasive plant species.

**Please join us as we come together to realize important conservation goals and explore and respect the lands entrusted to us.**

**For more information contact Peg Merrens, Upper Valley Land Trust, 603-643-6626 or Skip Sturman, Thetford Conservation Commission, 802-785-2423**



*Left: An aerial view of the 208-acre Ely Mountain Conservation Area.*

*Above: The Conservation Commission identified 11 species of ferns and numerous wildflowers while visiting the property in June 2013. Their inventory also notes massive old sugar maples and enormous ash trees. The full list and photos from a recent visit are posted on UVLT’s website at [www.uvlt.org/land-conservation/ely-mountain-conservation-campaign/](http://www.uvlt.org/land-conservation/ely-mountain-conservation-campaign/)*