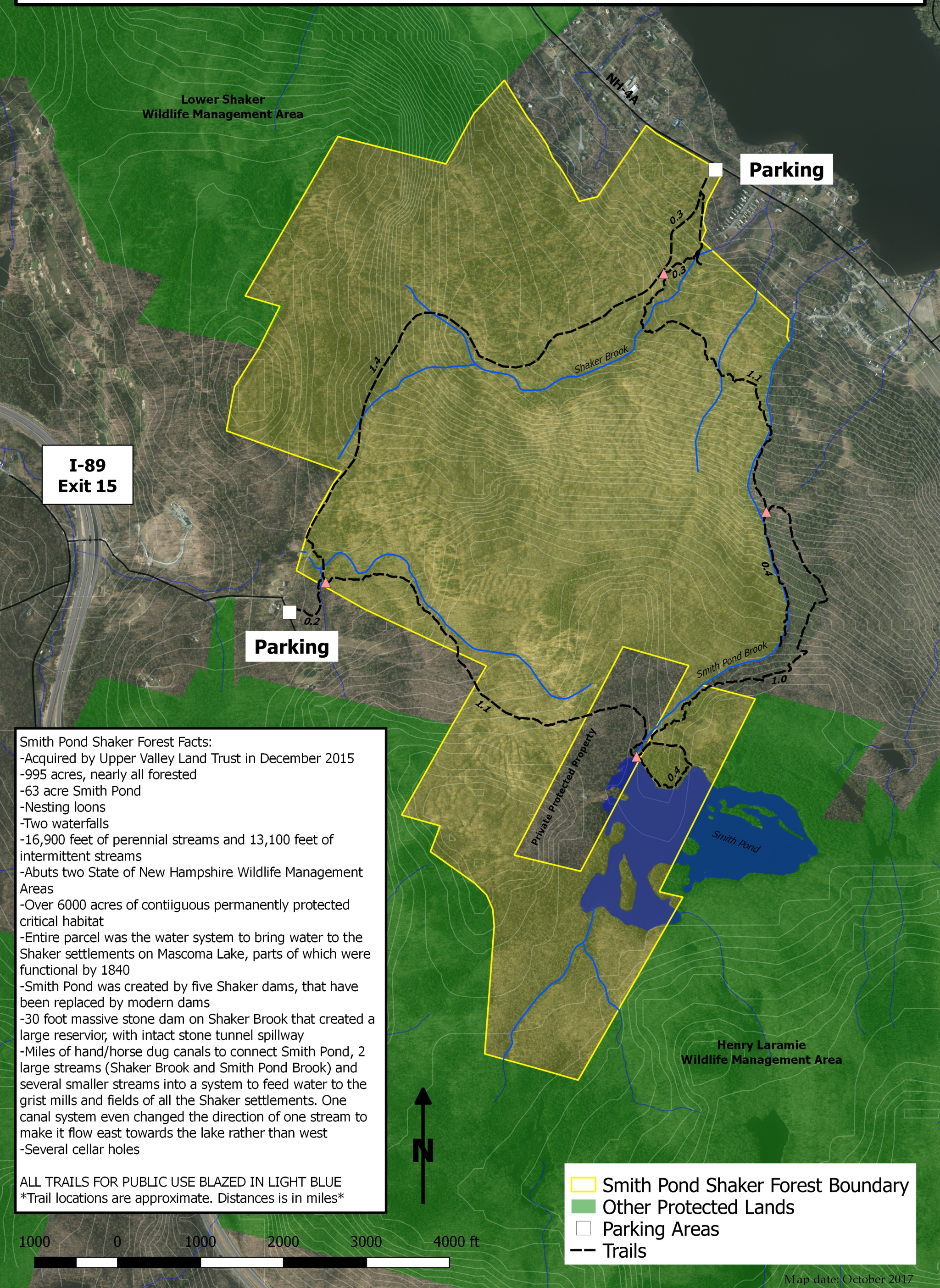


# Upper Valley Land Trust Smith Pond Shaker Forest Trails



**I-89  
Exit 15**

**Parking**

**Parking**

**Smith Pond Shaker Forest Facts:**  
 -Acquired by Upper Valley Land Trust in December 2015  
 -995 acres, nearly all forested  
 -63 acre Smith Pond  
 -Nesting loons  
 -Two waterfalls  
 -16,900 feet of perennial streams and 13,100 feet of intermittent streams  
 -Abuts two State of New Hampshire Wildlife Management Areas  
 -Over 6000 acres of contiguous permanently protected critical habitat  
 -Entire parcel was the water system to bring water to the Shaker settlements on Mascoma Lake, parts of which were functional by 1840  
 -Smith Pond was created by five Shaker dams, that have been replaced by modern dams  
 -30 foot massive stone dam on Shaker Brook that created a large reservoir, with intact stone tunnel spillway  
 -Miles of hand/horse dug canals to connect Smith Pond, 2 large streams (Shaker Brook and Smith Pond Brook) and several smaller streams into a system to feed water to the grist mills and fields of all the Shaker settlements. One canal system even changed the direction of one stream to make it flow east towards the lake rather than west  
 -Several cellar holes

ALL TRAILS FOR PUBLIC USE BLAZED IN LIGHT BLUE  
 \*Trail locations are approximate. Distances is in miles\*

- Smith Pond Shaker Forest Boundary
- Other Protected Lands
- Parking Areas
- Trails

1000 0 1000 2000 3000 4000 ft