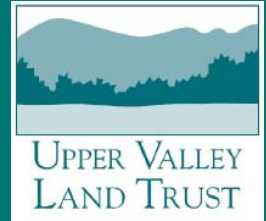


SUPPORTING

Agriculture and Community



With over a mile and a half of frontage on Robinson Road and nearly three miles of perennial streams including Fay Brook, the Manning Farm sits in one of Strafford's most scenic landscapes.

It was while driving the truck that picked up milk from this farm that Roscoe Manning fell in love with it and informed his wife, Ruth, that he had found the perfect farm for them to buy.

The land encompasses 382 acres, including productive hayland, pasture, and working forest. Wooded hillsides on both sides of the valley have provided sap for maple sugaring, and lumber and firewood for the Manning family.

Now Roscoe and Ruth's children are planning the farm's next chapter, working with the Upper



Valley Land Trust (UVLT) to conserve the land so that Earl Ransom and Amy Huyffer of nearby Rockbottom Farm can buy it.

Rockbottom Farm, an organic dairy and the last dairy in Strafford, has been slowly increasing its herd size over 15 years. Milk is processed at the on-farm Strafford Organic Creamery for regional milk and ice-cream distribution.

Rockbottom Farm has leased portions of the Manning farmland for pasture and hay. Buying it will enable them to build a barn, improve on-site infrastructure, and make their operation more efficient.

We've raised over \$285,000 through our Fund for Conservation Action.

We hope that Strafford residents and supporters of local agriculture will contribute the remaining \$15,000 needed to complete the transaction before year-end.

Conservation Solutions *for the Places You Love*

- Approximately 40 acres of prime and state wide significant agricultural soils
- 1.6 miles of scenic frontage on Robinson Road
- Within two miles of 1600 acres of UVLT and State protected land
- Three mile public access loop trail
- Supports 9.2 acres of forested and emergent wetlands
- Protects working land for agriculture and forestry in Strafford
- Provides land stability for the Strafford Organic Creamery.

YOU CAN HELP!

Make your gift payable to:
Upper Valley Land Trust

19 Buck Road
Hanover, NH 03755

or make a secure on-line contribution at:
www.UVLT.org



Yes, I want to support agriculture and community in Strafford!

Enclosed is my gift of:

_____ \$500

_____ \$250

_____ \$100

_____ Other

Your contribution is tax-deductible.

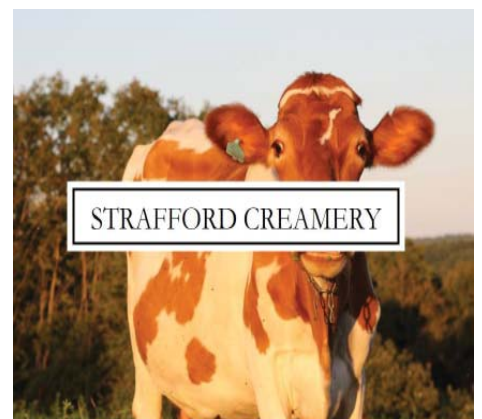
Name _____

Address _____

City _____

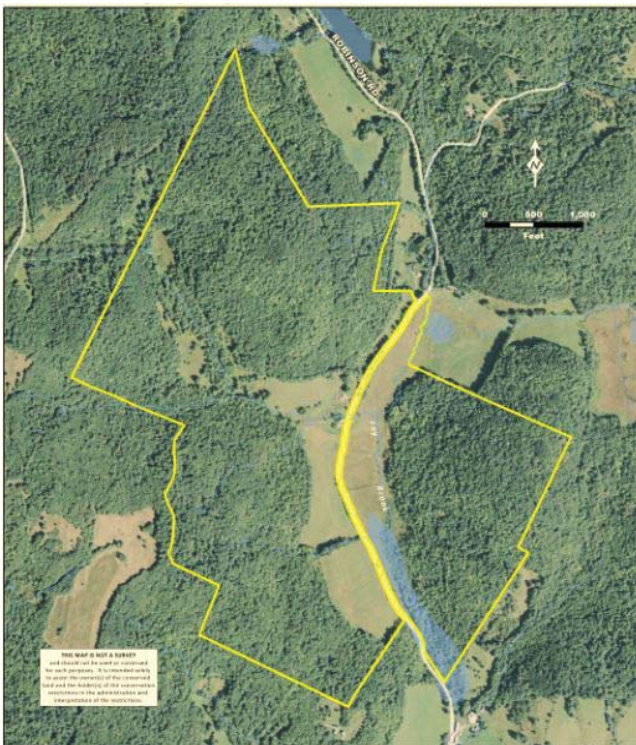
State _____ Zip _____

Email _____





Please join us as we come together to conserve productive land and support agriculture in Strafford!



The Manning Farm is a core part of the iconic Strafford landscape, supporting a growing local business and preserving a heritage of farming. Adjacent and nearby land has been purchased by Utah-based New Vista Corporation, which intends to create a 20,000-person community in four Vermont towns, including Strafford. Instead, the UVLT will purchase a conservation easement, making the land more affordable

to Earl and Amy and keeping the land in local ownership, producing local food.

About Conservation Easements:

Conservation easements are powerful, permanent legal agreements that specify how a property can be used and developed no matter who owns the land in the future. The conserved land remains in private ownership, used for farming and forestry or as open space and natural areas. UVLT is responsible for upholding the conservation easement terms forever and maintains an endowment fund to provide for inspection and enforcement. Conservation easements may be sold or donated to a land trust.



About the Upper Valley Land Trust:

The Upper Valley Land Trust is a non-profit land conservancy that works in 45 Vermont and New Hampshire towns. UVLT provides conservation leadership, tools and expertise to permanently protect the working farms, forested ridges, wildlife habitat, water resources, trails and scenic landscapes that make the Upper Valley a special place to live. Working directly with landowners who voluntarily choose to conserve their land, UVLT has protected over 500 properties encompassing more than 52,000 acres of land.

