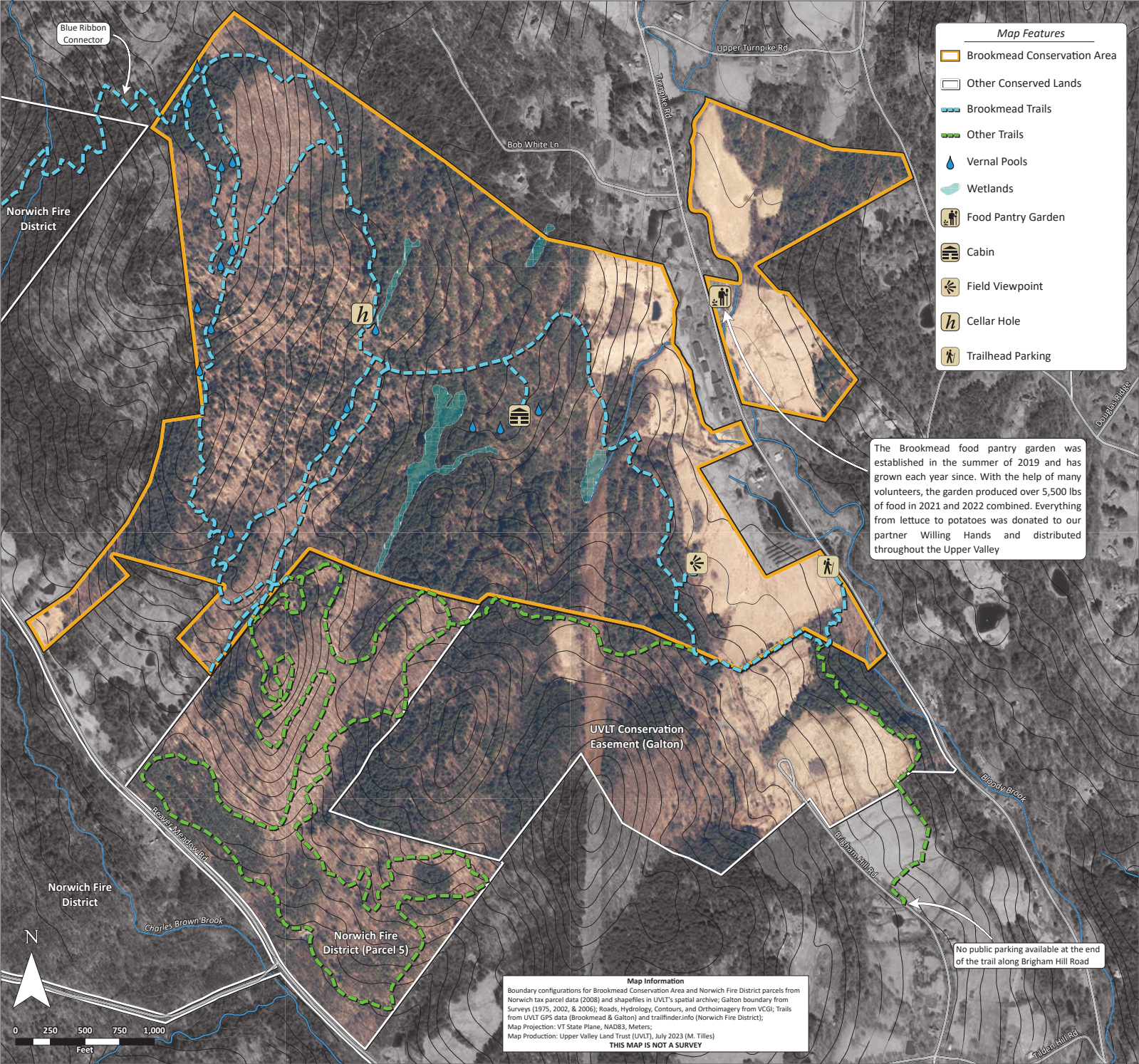


Brookmead Conservation Area

Upper Valley Land Trust



- Map Features**
- Brookmead Conservation Area
 - Other Conserved Lands
 - Brookmead Trails
 - Other Trails
 - Vernal Pools
 - Wetlands
 - Food Pantry Garden
 - Cabin
 - Field Viewpoint
 - Cellar Hole
 - Trailhead Parking

The Brookmead food pantry garden was established in the summer of 2019 and has grown each year since. With the help of many volunteers, the garden produced over 5,500 lbs of food in 2021 and 2022 combined. Everything from lettuce to potatoes was donated to our partner Willing Hands and distributed throughout the Upper Valley

No public parking available at the end of the trail along Brigham Hill Road

Map Information
 Boundary configurations for Brookmead Conservation Area and Norwich Fire District parcels from Norwich tax parcel data (2008) and shapefiles in UVLT's spatial archive; Galton boundary from Surveys (1975, 2002, & 2008); Roads, Hydrology, Contours, and Orthoimagery from VGI; Trails from UVLT GPS data (Brookmead & Galton) and trailfinder.info (Norwich Fire District);
 Map Projection: VT State Plane, NAD83, Meters;
 Map Production: Upper Valley Land Trust (UVLT), July 2023 (M. Tilles)
THIS MAP IS NOT A SURVEY