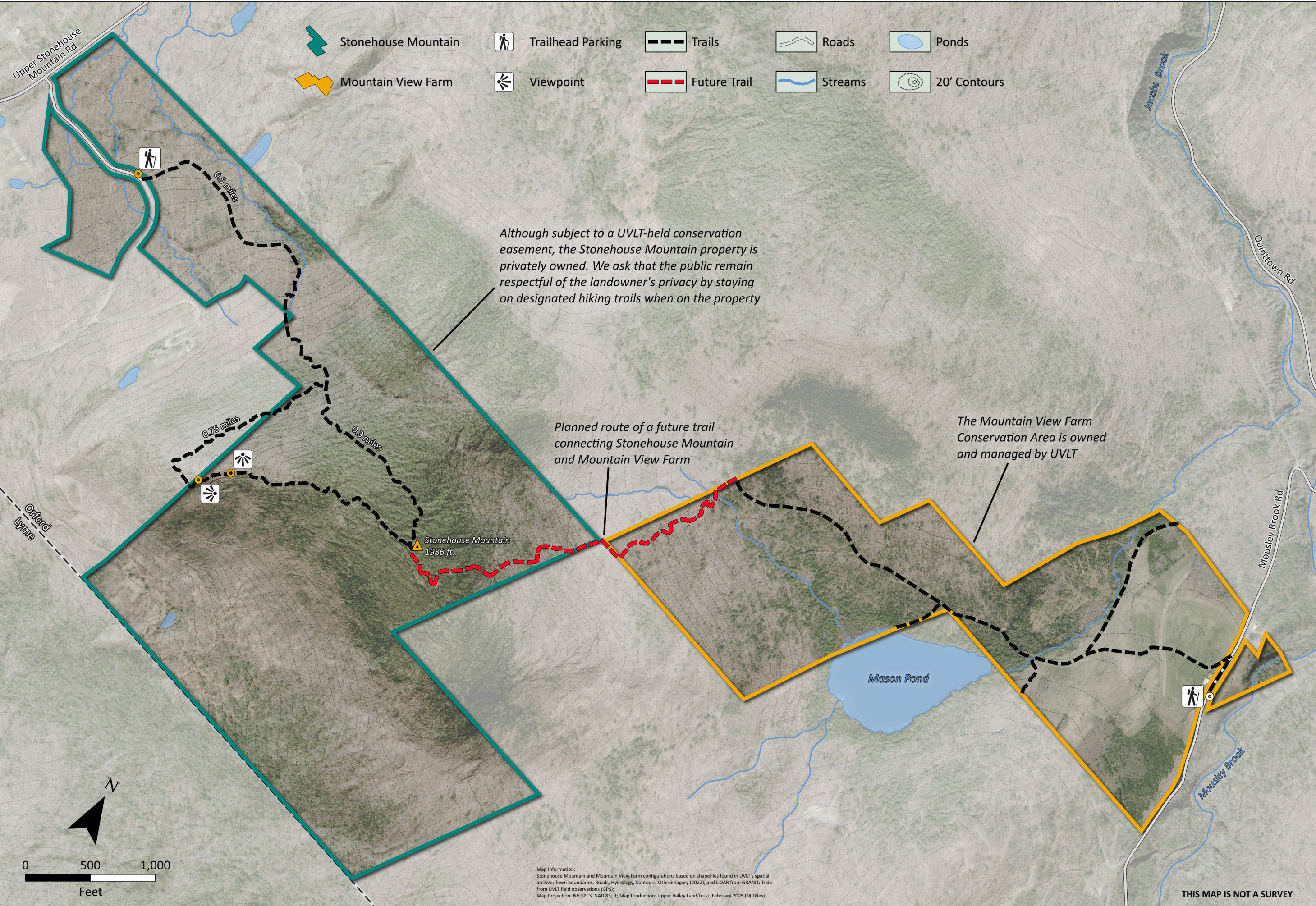




Stonehouse Mountain & Mountain View Farm Trail Network

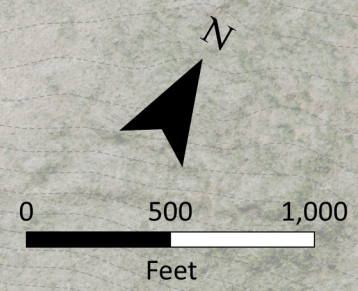
Upper Valley Land Trust



Although subject to a UVLT-held conservation easement, the Stonehouse Mountain property is privately owned. We ask that the public remain respectful of the landowner's privacy by staying on designated hiking trails when on the property

Planned route of a future trail connecting Stonehouse Mountain and Mountain View Farm

The Mountain View Farm Conservation Area is owned and managed by UVLT



Map Information:
Stonehouse Mountain and Mountain View Farm configurations based on shapefiles found in UVLT's spatial archive; Town boundaries, Roads, Hydrology, Contours, Orthoimagery (2022), and LIDAR from GRANIT; Trails from UVLT field observations (GPS);
Map Projection: NH SPCS, NAD 83, ft; Map Production: Upper Valley Land Trust, February 2025 (M.Tilles).

THIS MAP IS NOT A SURVEY